


## MEMORANDUM

TO: Greg Jenkins, Interim City Administrator  
FROM: Richard Klimes, Director of Parks and Recreation   
DATE: Thursday, July 30, 2020  
SUBJECT: Request to Approve Mini-Pitch Project Concept Plan and Cost Estimate Subject to Outside Funding for Muscatine Skate Park

## INTRODUCTION:

Please accept this memo and the attached information as a request for the City Council to approve the Mini-Pitch Concept Plan and Cost Estimate subject to outside funding for the addition of a MUSCO Mini-Pitch to be added to the Muscatine Skate Park site.

## BACKGROUND:

The Parks and Recreation Department was recently contacted by representatives from MUSCO Lighting about their interest in developing and promoting their new product line of a "Mini-Pitch" in Muscatine. Attached please see the Letter of Intent from MUSCO Lighting, the Mini-Pitch Brochure, Mini-Pitch Fact Sheet and site map.

The Muscatine Skate Park was built in 2004 as part of the Pearl of Mississippi Community Projects. Included in the Skate Park is a concrete in-line/foot hockey rink. The rink will be repurposed with the MUSCO Mini-Pitch System to accommodate soccer and in-line/foot hockey.

## RECOMMENDATION:

At this time, the City Staff would recommend that the City Council approve the MUSCO Mini-Pitch Project Concept Plan and Cost Estimate subject to outside funding.

As presented in the attached Letter of Intent from MUSCO Lighting, MUSCO will provide the mini-pitch materials and installation valued at roughly \$70,000.00 at no cost to the City. They will also help identify funding sources for the remaining roughly \$20,000.00 needed to fund the acrylic surface. The City will be responsible for any fence removal needed.

The Parks and Recreation Advisory Commission at its meeting on July 29, 2020 endorsed this project by general consensus of commission members present. Additionally, the soccer community and the Greater Muscatine Chamber of Commerce and Industry also support this project.

**BACKUP INFORMATION:**

1. MUSCO Lighting Letter
2. Mini-Pitch System Brochure
3. Mini-Pitch Fact Sheet
4. Site Map

Thank you for your time and attention to this matter. Please contact me if you have any comments, questions, or concerns.

C. John Dindinger, MUSCO Lighting  
Jason Schillig, MUSCO Lighting  
Nick Gow, Superintendent of Parks

Corporate: 100 1st Ave West · PO Box 808 · Oskaloosa, IA 52577 · 641/673-0411 · 800/825-6020 · Fax: 641/673-4740  
Manufacturing: 2107 Stewart Road · PO Box 260 · Muscatine, IA 52761 · 563/263-2281 · 800/756-1205 · Fax: 800/374-6402  
Web: www.musco.com · Email: lighting@musco.com



July 28, 2020

To: Richard Klimes and Nick Gow, City of Muscatine

Re: Providing and installing a Mini-Pitch System immediately adjacent to the Skate Park

Richard/Nick:

Following is the concept plan, cost estimate, and funding source(s) that we discussed to get a Musco Mini-Pitch System installed and operational in the City to help promote exercise and positive activities/choices of the local youth, via soccer, within Muscatine.

Intent is to utilize the existing footprint in the fenced area immediately adjacent to the skatepark. Exact size not set but existing footprint is roughly 100'x60'. Please see attached brochure/literature and the following breakdown:

**-Removal/demo** of portion of existing fencing (if needed) to be done by the City while coordinating with Musco. Intent is to see if fencing can remain in some fashion and allow mini-pitch to fit inside the fencing.

**-Mini-Pitch System:** approximate size 100'x50', or slightly smaller, retrofit one pole to be LED to light the mini-pitch and install Musco's Control-Link System (allows scheduling and remote control of the lights by approved City personnel) for the Mini-Pitch itself. Materials and installation covered 100% by Musco, assuming adequate power located nearby. From initial review we don't expect power to be an issue. Estimated value of this is approximately \$70,000.00. Estimated installation timing once location is prepped & ready is 5-10 working days max, and again materials and labor provided by Musco workers.  
**Source of funds: 100% donation by Musco.**

**-Acrylic surface:** is currently estimated to be \$20,000.00. This is/would be done by an outside vendor (TBD) and is not covered by Musco. Installation timeframe varies, but it is done after the modular mini-pitch is installed. **Source of funds: Outside source of funds.**

**-Timing:** This proposal is in effect through Dec 31<sup>st</sup>, 2020. If this project has not been approved or moving forward by that date, we would have to meet and review current status, where we could possibly extend the offer, assuming the project would then move forward in a reasonable time frame.

We look forward to your thoughts and comments.

Sincerely,  
John Dindinger and Jason Schillig  
Musco Lighting

# Mini-Pitch System™

## Modular Sports Solution



**MUSCO**  
Lighting  
We Make It Happen.

**US**  
SOCCER  
FOUNDATION

***The Mini-Pitch System™  
modular sports solution has  
an innovative, all-in-one design  
to help communities create  
fun and active play spaces by  
revitalizing public areas.***

Created to assist the U.S. Soccer Foundation in providing safer places to play the game, the Mini-Pitch System is ideal for transforming abandoned courts and other underutilized areas into places where children and families can come together in the spirit of teamwork, empowerment, and physical activity. The system supports the Foundation's *It's Everyone's Game* movement to ensure that all children have access to the game and its many benefits.

**Complete**

The mini-pitch comes as a modular system complete with lighting, fencing, goals, benches, ADA-compliant access, and lockable storage.

**Convenient**

Assembly can be done by a three-person volunteer crew in approximately 12 hours.

**Customizable**

You'll have options on the size of your pitch and custom signage to ensure it meets your exact needs. Surfacing is handled by another vendor on a project-by-project basis.





*"Since the installation at Santa Fe South, we're seeing kids from different high schools hanging out and playing together almost every night. It's unifying kids using these courts."*

**– Mickey Dollens, Executive Director of the Energy Assist Foundation**

## Complete System

The Mini-Pitch System™ modular sports solution includes lighting, structural, and electrical components designed and engineered to work together for streamlined installation and reliable operation.

- Factory-built, wired, aimed, and tested.
- Fast, trouble-free installation.
- Rugged reliability, designed to be long-lasting in all weather conditions and atop all surfaces.
- 10-year warranty covers all parts and labor.

## TLC for LED® Lighting

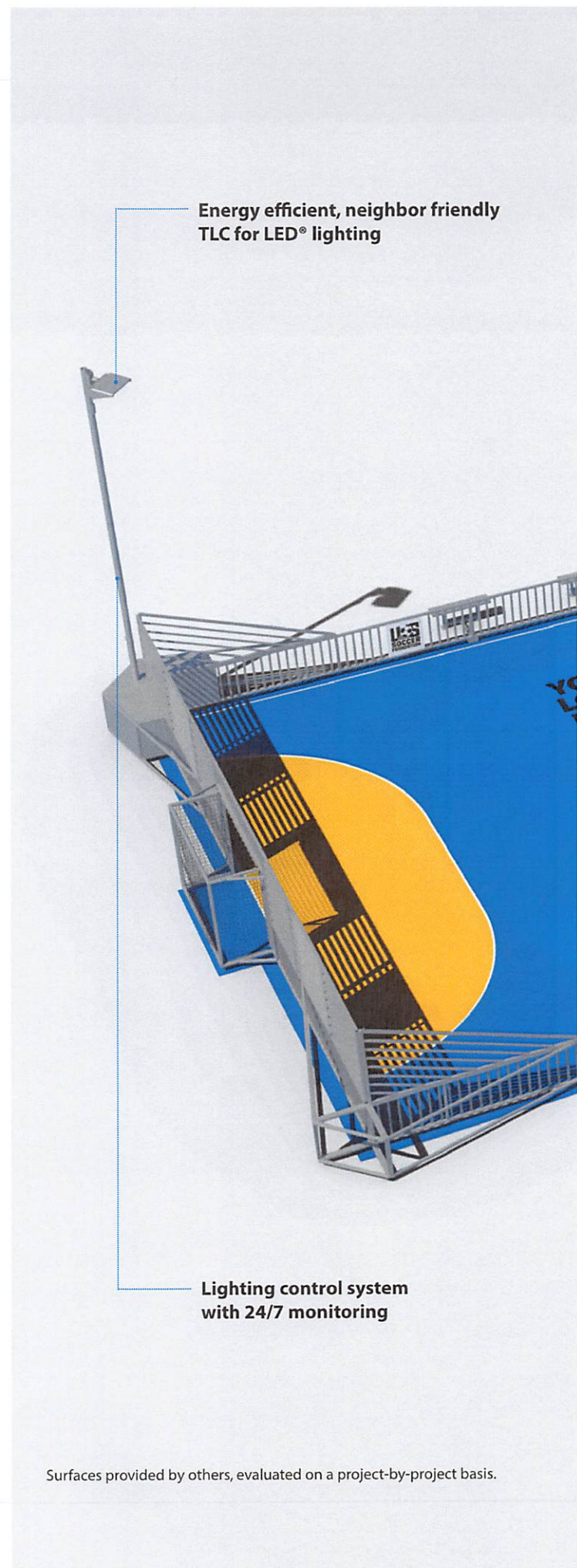
Enjoy the benefits of the LED sports lighting technology of choice at venues around the world.

- Custom optics create a more uniform distribution of light for better visibility.
- Patented glare control preserves darkness around your pitch, keeping neighbors happy.
- Instant on/off and energy efficient operation.

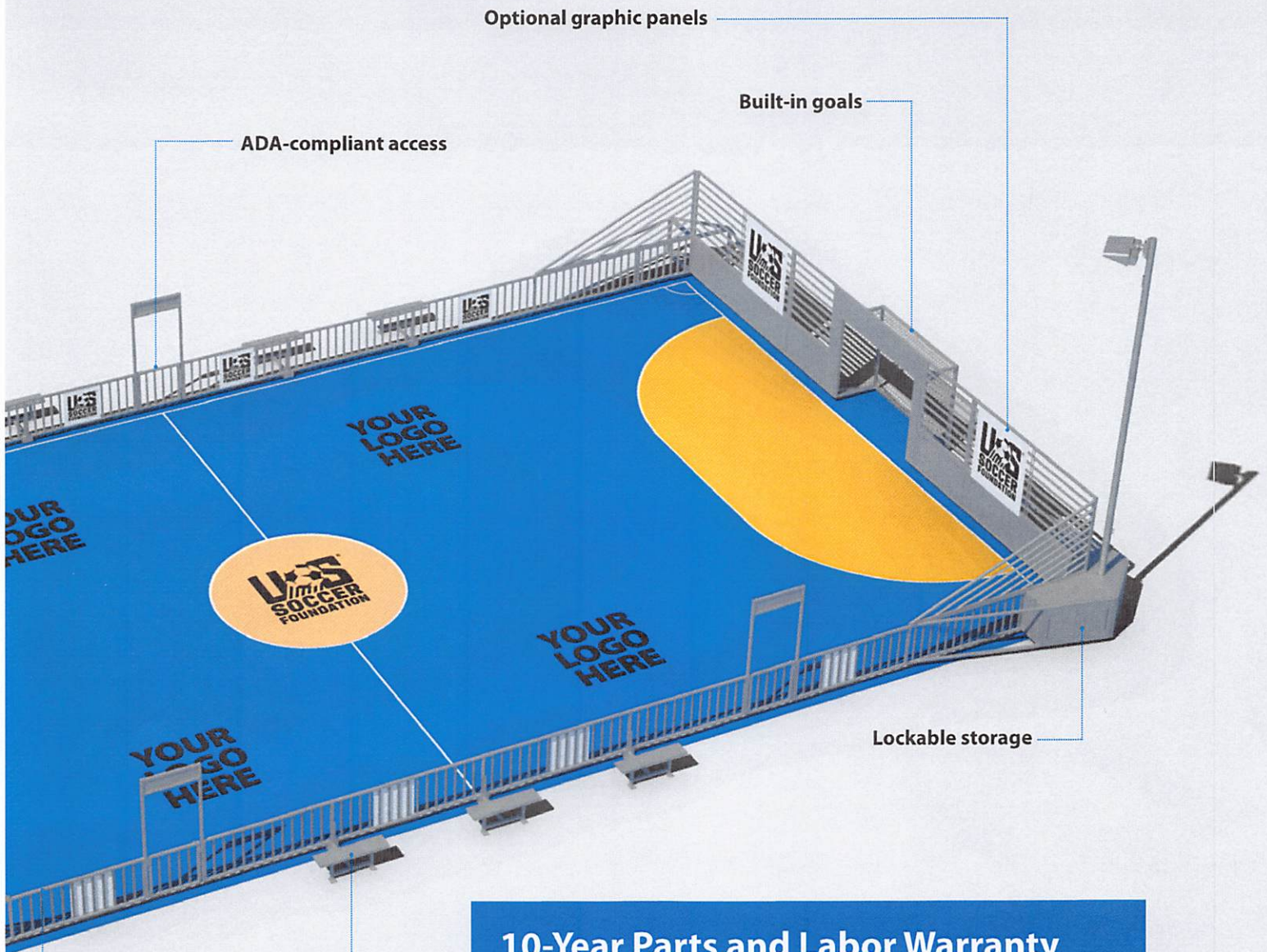
## Control-Link® Service

Your system will be supported by Musco's Control-Link control and monitoring service.

- Manage your lights instantly, from anywhere, with a touch of a smart phone.
- 24/7 support from the Musco Team includes proactive monitoring and scheduling assistance.
- Get a real, live voice on the other end of the phone anytime you call Control-Link Central™ service center.



Surfaces provided by others, evaluated on a project-by-project basis.



Optional graphic panels

Built-in goals

ADA-compliant access

Lockable storage

Benches

Galvanized steel fencing and structure

## 10-Year Parts and Labor Warranty

With Musco's long-term parts and labor warranty, you'll have the peace of mind in knowing that you won't have to pay for maintenance to your Mini-Pitch System.

- No maintenance costs for the next decade.
- Every part and all labor covered.
- Supported by Musco's regionally-based technicians.

And with the 24/7 proactive monitoring of Control-Link, if any issues with your mini-pitch lighting arise we'll probably know before you do.

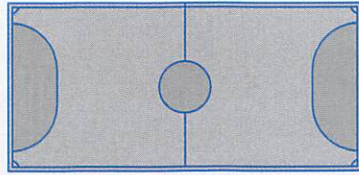
*Separate playing surface warranty is provided by the surface contractor.*



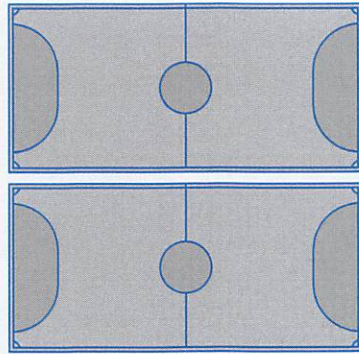
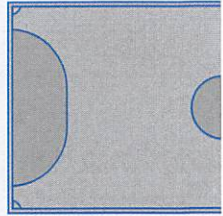
# Your Pitch,

The Mini-Pitch System™ modular sports solution gives

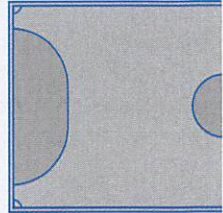
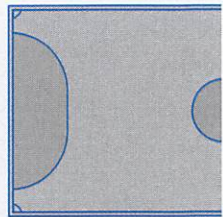
## Size



40 ft x 84 ft  
12 m x 25 m



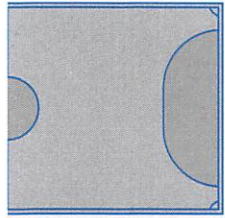
76 ft x 84 ft  
23 m x 25 m



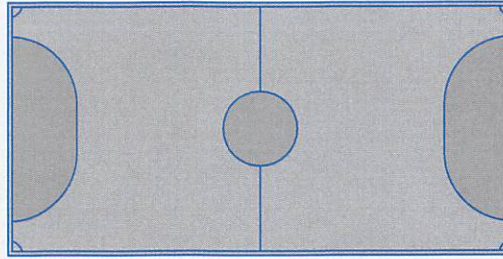
Desert West, Phoenix, Arizona, USA

## Your Way

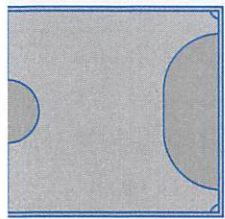
you customization options to meet your exact needs.



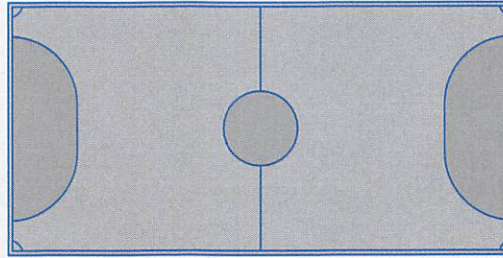
50 ft x 102 ft  
15 m x 31 m



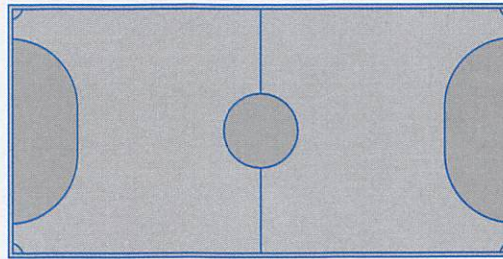
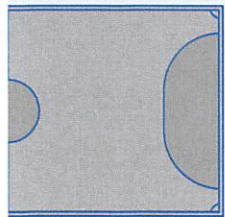
60 ft x 120 ft  
18 m x 36 m



96 ft x 102 ft  
29 m x 31 m



116 ft x 120 ft  
35 m x 36 m



Eakin Elementary School, Columbus, Ohio, USA



**We Make It Happen**

[www.musco.com](http://www.musco.com)  
e-mail: [lighting@musco.com](mailto:lighting@musco.com)



[www.ussoccerfoundation.org](http://www.ussoccerfoundation.org)  
e-mail: [info@ussoccerfoundation.org](mailto:info@ussoccerfoundation.org)

©2019 Musco Sports Lighting LLC · M-3208-enUS-3  
U.S. and foreign patents issued and pending.

US Soccer Foundation is a registered trademark in the United States to United States Soccer Foundation.



## Mini-Pitch System™ Modular Sports Solution

### All-in-one, modular system

- LED lighting
- Benches and lockable storage
- Galvanized steel surrounding structure
- Goals
- ADA-compliant access
- Beverage holders
- Optional signage opportunities

### Easy, permanent installation

### Durable, stable structure

### Comprehensive long-term warranty



# Technical Specifications

## Lighting

- Two LED luminaires
- 20-30 fc (200-300 lux) (vary by pitch size)
- Equipped with Control-Link® for instant on/off scheduling and remote capabilities

## Pitch Sizes

- 40 ft x 84 ft (12 m x 25 m) pitch: 7650 lb (3470 kg)
- 50 ft x 102 ft (15 m x 31 m) pitch: 9400 lb (4264 kg)
- 60 ft x 120 ft (18 m x 36 m) pitch: 10,700 lb (4854 kg)
- All units are approved for 175 mi/h (78 m/s) winds without any signage and 120 mi/h (54 m/s) with signage

## Playing Area

- Provided by others
- Acrylic surface (recommended)

## Materials

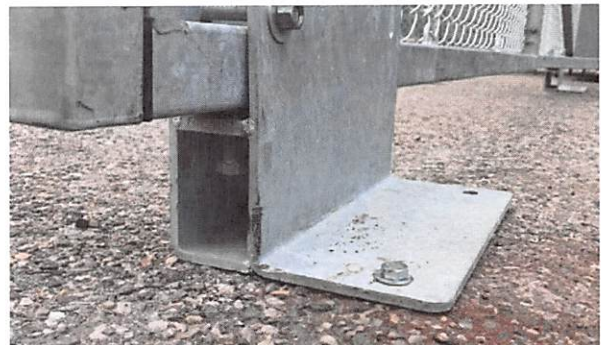
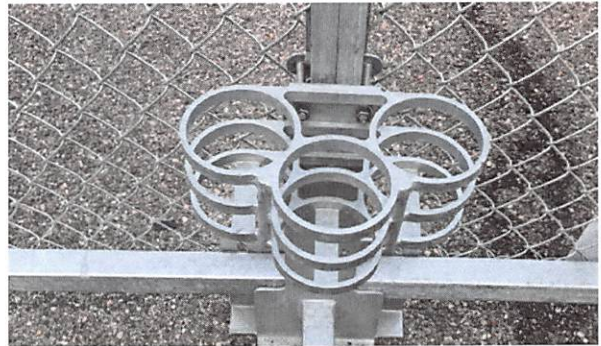
- Square tubing and channel material: 11 gauge 0.120 in (3 mm) thick steel
- Sheet metal: 12 gauge 0.109 in (2.7 mm) thick
- Anchor for asphalt surface: 12 in (304 mm) long, 7/8 in (22.2 mm) diameter, with a 7/16 in (11 mm) female head
- Anchor for concrete surface: 1/2 in x 5 1/2 in (12.7 mm x 139.7 mm)
- Galvanized after welding

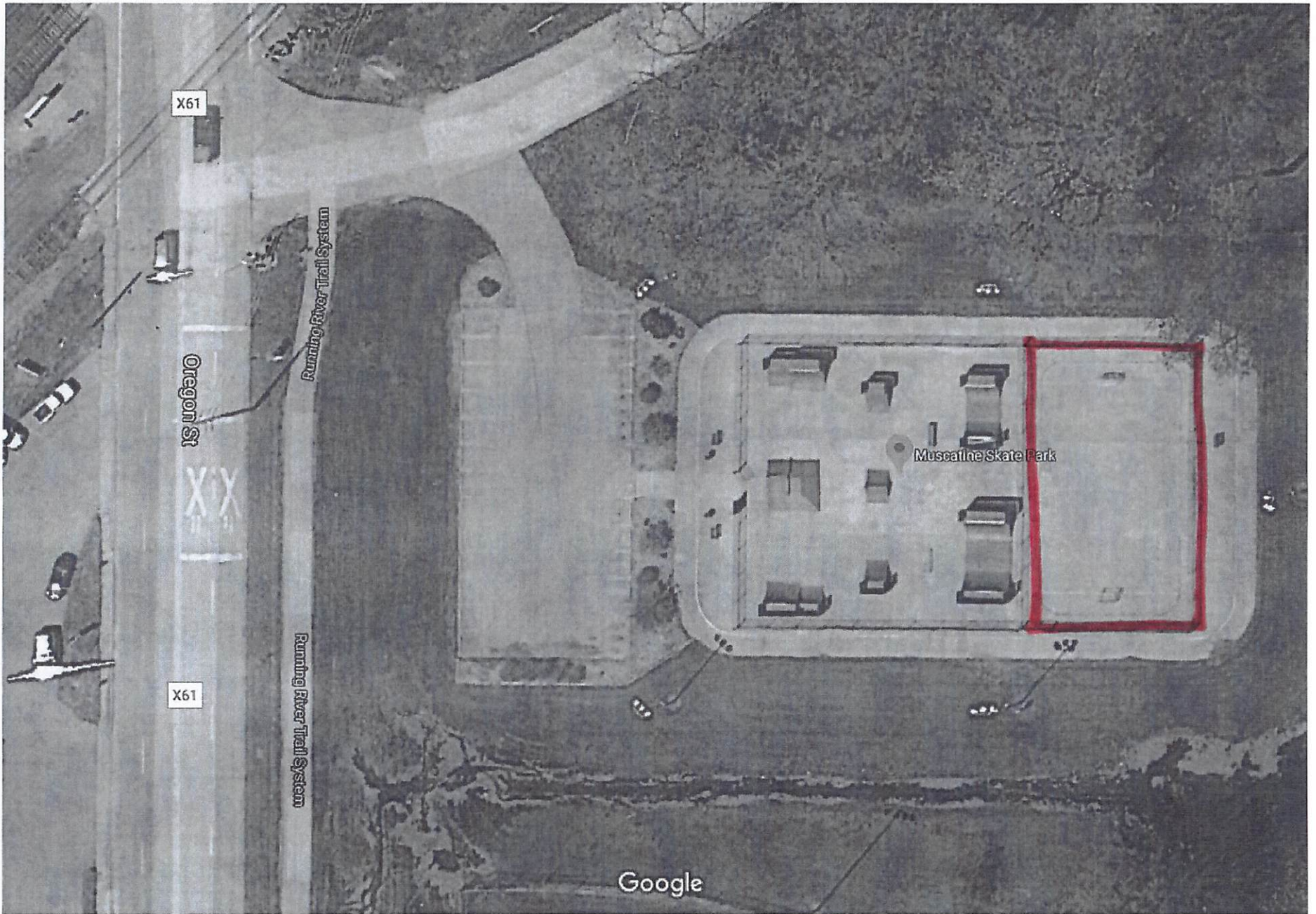
## Goals and Storage

- Goal dimensions: 70 in (1.7 m) tall x 90 in (2.3 m) wide x 34 in (0.9 m) deep
- Storage: 20 ft<sup>3</sup> (566 l) of storage on two corners with lockable cabinets

## Delivery

- System fits on one truck
- Installed in 2-3 days with a 3-person crew





# MINI PITCH SITE MAP

Map data ©2020, Map data ©2020 20 ft